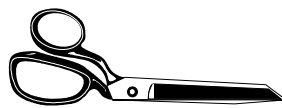


**CYMDEITHAS AMAETHYDDOL FRENHINOL CYMRU CYF  
ROYAL WELSH AGRICULTURAL SOCIETY LTD**



**NODDWR / PATRON: HER MAJESTY THE QUEEN  
LLYWYDD / PRESIDENT: MR TREBOR EDWARDS**

# **ATODLEN GWAITH LLAW**



## **SCHEDULE FOR HANDICRAFTS**

Neuadd Arddangos De Morgannwg  
South Glamorgan Exhibition Hall

Sioe Frenhinol Cymru, Llanelwedd, Llanfair ym Muallt  
Royal Welsh Show, Llanelwedd, Builth Wells

**Gorffennaf / July 21~22~23~24 2008**

**Ceisiadau olaf: 26 Mai 2008  
Closing date for entries: 26 May 2008**

Miss Bethan Lewis

CAFC, Llanelwedd  
Llanfair ym Muallt, Powys, LD2 3SY  
Ffôn: (01982) 554411  
Ffacs: (01982) 553563  
Ebost: [bethan@rwas.co.uk](mailto:bethan@rwas.co.uk)

RWAS, Llanelwedd  
Builth Wells, Powys, LD2 3SY  
Tel: (01982) 554411  
Fax: (01982) 553563  
Email: [bethan@rwas.co.uk](mailto:bethan@rwas.co.uk)

**DOSBARTHIADAU A  
RHEOLAU /  
CLASSIFICATION AND  
RULES**

**FERSIWN GYMRAEG /  
WELSH VERSION**

*(Tudalen / Pages 4- 7)*

**FERSIWN SAESNEG /  
ENGLISH VERSION**

*(Tudalen / Pages 10 – 13)*

**Prif Stiward yr Adran / Chief Sectional Steward**

Mrs M Spencer, Croesonnen Cottage, Mardy, Abergavenny, Monmouthshire,  
NP7 6HT.

**Uwch Stiward Gwaith Llaw / Senior Handicraft Steward**

Mrs M Lewis, 7 St Anne's Court, Talygarn, Pontyclun, CF72 9HH.

**Beirniaid / Judges**

(Dosbarthiadau / Classes 1 – 7)

Mrs Myfanwy Jones, Elwern, Heol Esgob, Llanelwy, Sir Ddinbych, LL17 oPN

(Dosbarthiadau / Classes 8 – 14)

Mrs Mary Mars Lloyd, Llys-y-Bryn, Llanynys, Sir Ddinbych, LL16 4NY

(Dosbarthiadau / Classes 15 – 19)

Mrs Rhiannon Williams, 'Llyn', 4 Llwyn y Giblust, Llansannan, Sir Conwy, LL16 5HQ

(Dosbarthiadau / Classes 20– 26)

Mr Bryan Jones, Tyn y Celyn, Llangynhafal, Rhuthun, LL15 1RT

(Dosbarthiadau / Classes 27 – 34)

Mrs Eurgain Howatson, Tŷ Newydd, Nantglyn, Denbigh, Denbighshire, LL16 5RG

**Stiwardiaid y Beirniaid / Judges' Stewards:**

Mrs M Lewis, 7 St Anne's Court, Talygarn, Pontyclun, CF72 9HH.

Miss J Thomas, Maenog, Llanwrthwl, Llandrindod Wells, Powys, LD1 6NU.

Mrs Gwyneth Morgan, Carreg y Llech, Treuddyn, Mold.

Alison Gibbon, Picket Farm, Llandow, Nr Cowbridge, Vale of Glamorgan, CF71 7PZ.



Cyflwyniad Gwobrau -  
PRESENTATION OF AWARDS

**Cynnyrch Llaeth, Cynnyrch a Gwaith Llaw -  
Dairy Produce, Produce and Handicrafts**

**Dydd Iau 24 Gorffennaf / Thursday 24<sup>th</sup> July 2.30pm**  
at the  
**Produce & Handicraft Section**

**DOSBARTHIAID**

**DOSBARTH**

1. Clustog cwiltiog.
2. Dilledyn merch wedi'i weu â llaw (nid cyfwisg).
3. Eitem ailgylchedig (heb fod yn fwy na 1m<sup>2</sup>).
4. Eitem o gotwm wedi'i grosio'n fân.
5. Nod tudalen brodiog.
6. Cryst wedi'i addurno â llaw.
7. Sgert merch.
8. Darlun mewn brodwaith peiriant.
9. Darlun peintiedig.
10. 'Eisteddfod Ryngwladol Llangollen' unrhyw gyfrwng.
11. Eitem o ffeltin gwlan.
12. Sgein ac eitem mewn gwlan a nyddwyd â llaw.
13. Sampler sy'n cynnwys gleinwaith.
14. Eitem sy'n dangos brodwaith tynnu edau.
15. Collage ffabrig.
16. Eitem o cerameg.
17. Sgarff peintiedig sidan.
18. Cerdyn cyfarch celfyddyd losgliw (cwyr).
19. Ffotograffiaeth – 'Pobl wrth eu gwaith' (y gwreiddiol a'r fersiwn wedi'i wella'n ddigidol).
20. Rhesel gylchgronau, unrhyw gyfrwng.
21. Stôl droed, unrhyw gyfrwng.
22. Pâr o dynwyr golau / llenni pren.
23. Rhesel allweddi.
24. Ffon fugail (corn).
25. Peth dal poteli gwin.
26. Llwy gawl hen ffasiwn.

**Tâl ymgeisio**  
**75c**

**Gwobrau**  
1af: £8; 2ail: £6; 3ydd: £4.

**CYSTADLAETHAU PLANT**

## Dim tâl ymgeisio

**Gwobrau** 1af: £2; 2ail: £1.50; 3ydd: £1.00

(Nodwch eich Dyddiad Geni ar y Ffurflen Gais os gwelwch yn dda)

### Ysgol Gynradd - 7 mlwydd oed ac iau ar 21/07/08

27. Pot blodau wedi'i addurno, unrhyw gyfrwng.
28. Darlun wedi'i beintio â bys (maint mwyaf A4).

### Ysgol Gynradd - 8 – 12 mlwydd oed ac iau ar 21/07/08

29. Collage pasta, (maint mwyaf A3).
30. Eitem wedi'i gwneud o ffelt.
31. Llawysgrifen – 'Saith Ryfeddod Cymru'

### Ysgol Uwchradd - 13 – 18 mlwydd oed ac iau ar 21/07/08

32. Eitem sy'n cynnwys edafedd brodio.
33. Cerdyn diolch, unrhyw gyfrwng.

### Llawysgrifen – Dosbarth 31

### Saith Ryfeddod Cymru

Yr Wyddfa fawr, a phont Llangollen,  
Pistyll Rhaeadr, Owrtyn a'i ywen,  
Eglwys Wreccsam, Ffynnon Gwenffrewi,  
A chlychau Gresffordd heb ddistewi.

## GWOBRAU ARBENNIG

- GA1) Bydd **Tlws Coffa V G Jones** yn cael ei ddyfarnu i'r arddangoswr sy'n ennill y nifer uchaf o bwyntiau yn yr adran gwaith llaw i oedolion.
- GA2) Bydd **gwobr Victoria Grant Cyf. o Risial Brenhinol Cymreig** yn cael ei dyfarnu i 'Bencampwr y Pencampwyr' - yr arddangosyn gorau drwyddo draw wedi'i ddewis o'r rhai a osodwyd yn gyntaf yn **Nosbarthiadau 1 - 26**.
- GA3) **Tarian Her Edward ac Eireen Perkins** wedi'i dyfarnu i'r arddangoswr sy'n ennill y nifer uchaf o bwyntiau yn nosbarthiadau'r plant - **Adran Gwaith Llaw**.

- GA4) Bydd gwobrau arbennig a gyflwynwyd yn garedig gan **Ann Gillis** yn cael eu dyfarnu i'r arddangoswr a osodwyd yn gyntaf yn nosbarthiadau 1 ac 11.
- GA5) Bydd gwobrau arbennig a gyflwynwyd yn garedig gan **Coats Crafts UK** yn cael eu dyfarnu i'r tri arddangoswr sy'n ennill y nifer uchaf o bwyntiau yn nosbarthiadau 1 - 19, ac eithrio dosbarthiadau 1 ac 11.
- GA6) Bydd y wobwr arbennig a gyflwynir yn garedig gan **Coats Crafts UK** yn cael ei dyfarnu i enillydd **Dosbarth 32 yn adran y Plant**.

## AMODAU

1. **RHAID I ARDDANGOSION BEIDIO Â BOD WEDI'U CYNNIG YN SIOE FRENHINOL CYMRU O'R BLAEN.**
2. Rhaid i bob arddangosiad a anfonir i'r Sioe gael ei gyfeirio i:  
Miss Bethan Lewis, CAFC Cyf., Llanelwedd, Llanfair ym Muallt, Powys, LD2 3SY.  
Bydd arddangosion ond yn cael eu dychwelyd os darperir pacediad addas ac y telir y cludiad. **Rhaid llwyfannu'r arddangosfeydd rhwng 4.00 a 7.00 prynhawn Dydd Sul, Gorffennaf 20ain, neu rhwng 6.00 a 8.00 bore Llun, Gorffennaf 21ain 2008.**
3. Ni fydd y Gymdeithas yn gyfrifol am unrhyw golled na difrod i'r arddangosfeydd na rhan ohonynt, yn ystod y Sioe. Ni fydd y Gymdeithas yn gyfrifol am golled unrhyw eitem ar y ffordd i'r sioe, neu o'r sioe.
4. Ni ellir symud yr arddangosfeydd o'i lle dros gyfnod y Sioe, a rhaid eu casglu rhwng **5.30 a 6.30** ar brynawn Dydd Iau 24ain Gorffennaf 2008. Bydd yr arddangoswr yn gyfrifol am unrhyw arddangosiad sydd yno ar ôl 6.30 ar noson olaf y Sioe.
5. Mae hawl gan arddangoswyr i gynnig hyd at ddwy ymgais ym mhob dosbarth.
6. Caiff y gwobrau eu dyfarnu neu eu hatal, gan y beirniaid a hwythau hefyd fydd a'r dyfarniad terfynol. Bydd gwobrau ariannol, os bydd yn bosibl, yn cael eu talu ymhen 28 diwrnod gweithiol o'r Sioe (heblaw mewn achosion o brotest).
7. Bydd yr ymgeiswyr sydd a thâl ymgeisio o isafswm o £10 yn derbyn tocyn mynediad undydd i'r Sioe. **Ni ganiateir ar unrhyw amod gwneud y tâl i fyny i £10 drwy rodd.** Mae'r taliadau ymgeisio yn cynnwys T.A.W.

8. Bydd yr adran ar gau ar gyfer beirniadu rhwng 9.00 a 12.30 y bore ar y diwrnod cyntaf.
9. Rhaid i bob arddangosiad fod yn waith yr arddangoswr.
10. Rhaid i gardiau rhif arddangoswr gael eu glynu'n ddiogel ym mhob arddangosyn.
11. Ni dderbynir nwyddau sydd yn fudr, wedi eu gwisgo, neu wedi eu defnyddio.
12. Dylid cwblhau'r gwaith ar bob arddangosiad. Pob gwaith i'w gwblhau'n llwyr oni bai y dywedir yn wahanol yn yr atodlen.
13. Dylid ysgrifennu manylion am unrhyw wrthdystiad ar bapur a'i roddi i'r Prif Stiward o fewn dwy awr i'r beirniadu ynghyd a blaendal o £25 a gaiff ei ad-dalu os cytunir a'r gwrthdystiad.
14. Nodwch yr amlen yn cynnwys eich ffurflen gais "Gwaith Llaw" os gwelwch yn dda.
15. Ni ddychwelir unrhyw arddangosiad heb fod yr amlen arddangoswyr swyddogol ar gael wrth law.

## RHAGLEN ARDDANGOSFA A CHYSTADLEUAETH

### Uwch Stiward

Mrs C Thomas, Cartref, Llantwit Road, Wick, Cowbridge, CF71 7QD.

Dydd Llun 21 Gorffennaf	9.00y.b 9.30y.b	Adran ar agor i'r cyhoedd. Gweithdeu crefft
Dydd Mawrth 22 Gorffennaf	9.00y.b 9.30y.b – 6.30y.p	Adran ar agor i'r cyhoedd Gweithdeu crefft
Dydd Mercher 23 Gorffennaf	9.00y.b 9.30y.b – 6.30y.p	Adran ar agor i'r cyhoedd Gweithdeu crefft
Dydd Iau 24 Gorffennaf	9.00y.b 9.30y.b – 6.30y.p	Adran ar agor i'r cyhoedd Gweithdeu crefft

## **Cynhelir**

**Gŵyl Tyddyn & Gardd Frenhinol Cymru** nesaf ar  
Mai 17 a 18 2008

~~~~~

**Ffair Aeaf Amaethyddol Frenhinol Cymru** nesaf ar  
Rhagfyr 1 a 2 2008

~~~~~

**Sioe Frenhinol Cymru** nesaf ar  
Orffennaf 20 – 23 2009

## **Trefn Y Siroedd Nawdd**

2008: Sir Morgannwg

2010: Ceredigion

*Victoria Grant Ltd.*

**Educational Supplies & Experience Learning Systems**

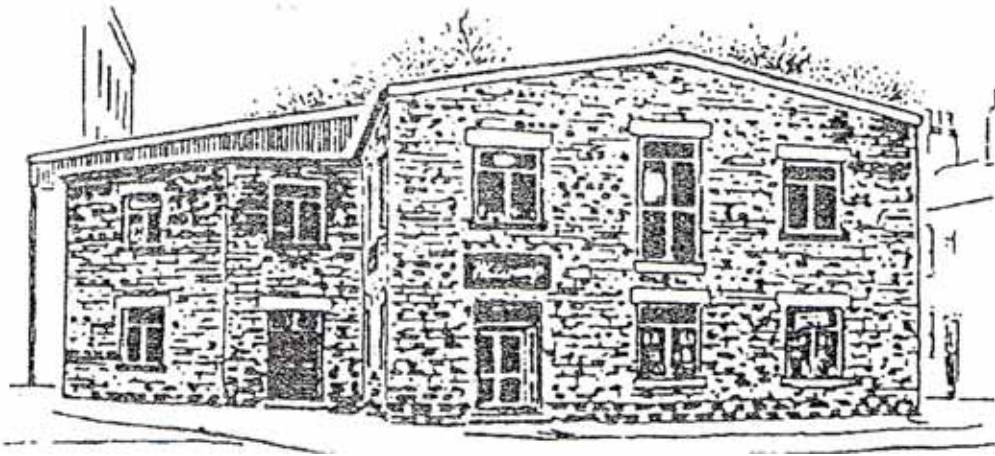
Waterways  
High Street  
Uppermill  
Oldham  
Lancashire

OL3 6HT

Tel : 01457 870756

Fax : 01457 874297

***Are pleased to award a  
Welsh Royal Crystal Prize to the 'Champion of  
Champions'  
- the overall best exhibit selected from the  
first placed in classes 1-26.***



 **Anchor**

**AWARDS**

at the


2008


**ROYAL WELSH SHOW**

The Anchor Awards will be presented to the exhibitors who achieve the highest number of points in all the following classes.

Classes 1 – 19

Excluding classes 1 & 11

 **Anchor**  
AWARD  
1<sup>st</sup> PRIZE (SP5)  
ANCHOR PRESENTATION  
BOX OF THREADS  
(worth £100)

 **Anchor**  
AWARD  
2<sup>nd</sup> PRIZE (SP5)  
ANCHOR PRESENTATION  
BOX OF THREADS  
(worth £75)

 **Anchor**  
AWARD  
3<sup>rd</sup> PRIZE (SP5)  
ANCHOR PRESENTATION  
BOX OF THREADS  
(worth £50)

 **Anchor**  
AWARD (SP6)  
**CHILDREN'S SECTION**  
1<sup>st</sup> PRIZE  
ANCHOR PRESENTATION  
BOX OF THREADS  
(worth £20)



**Coats  
Crafts UK**

## CLASSIFICATION

### CLASS

1. A quilted cushion.
2. A hand knitted ladies garment (not an accessory).
3. A Recycled item (not more than 1m<sup>2</sup>).
4. An item of fine crocheted cotton.
5. An embroidered bookmark.
6. A hand decorated t-shirt.
7. A lady's skirt.
8. A picture using machine embroidery.
9. A painted picture.
10. 'Llangollen International Eisteddfod' any medium.
11. An item of wool felting.
12. A skein and an item in hand spun wool.
13. A sampler incorporating beadwork.
14. An item showing drawn threadwork.
15. A fabric collage.
16. An item of ceramics.
17. A painted silk scarf.

**Entry fee:**  
75p

**Prize money:**  
1st: £8; 2nd: £6; 3rd: £4.

18. A encaustic art (wax) greetings card.
19. Photography – ‘People at work’ (the original and a digitally enhanced version).
20. A magazine rack, any medium.
21. A foot stool, any medium.
22. A pair of wooden light / curtain pulls.
23. A key rack.
24. A shepherd’s crook (horn).
25. A wine bottle holder.
26. An old fashioned cawl spoon.

## CHILDRENS COMPETITIONS

**No entry fee**

**Prize money**      1st: £2; 2nd: £1.50; 3rd: £1.00

**(Please specify your Date of Birth on the Entry Form)**

### **Primary School - 7 years of age and under on 23/07/07**

27. A decorated flowerpot, any medium.
28. A finger painted picture (maximum size A4).

### **Primary School - 8 – 12 years of age and under on 23/07/07**

29. A pasta collage, (maximum size A3).
30. An item made of felt.
31. Handwriting – ‘Seven Wonders of Wales’

### **Secondary School - 13 – 18 years of age and under on 23/07/07**

32. An item incorporating embroidery threads.
33. A thank you card, any medium.

### Class 31 - Handwriting

### **‘Seven Wonders of Wales’**

Pistyll Rhaeadr and Wrexham Steeple,  
Snowdon’s mountain without it’s people,  
Overton Yew Trees, St Winefride’s Well,  
Llangollen Bridge and Gresford Bells.

## SPECIAL PRIZES

- SP1) **The V G Jones Memorial Trophy** will be awarded to the exhibitor gaining the highest number of points in the adult handicraft section.
- SP2) **The Victoria Grant Ltd. prize of Welsh Royal Crystal** will be awarded to the 'Champion of Champions' - the overall best exhibit selected from the first placed in **Classes 1-26**.
- SP3) **The Edward and Eireen Perkins Challenge Shield** awarded to the exhibitor gaining the highest number of points in the children's classes - **Handicraft section**.
- SP4) Special prizes kindly presented by **Ann Gillis** will be awarded to the first placed exhibitor in classes 1 & 11.
- SP5) Special prizes kindly presented by **Coats Crafts UK** will be awarded to the three exhibitors gaining the highest number of points in classes 1 - 19, excluding classes 1 & 16.
- SP6) Special prize kindly presented by **Coats Crafts UK** will be awarded to the winner of **Class 32 in the Children's section**.

## CONDITIONS

1. **EXHIBITS MUST NOT HAVE BEEN PREVIOUSLY ENTERED AT THE ROYAL WELSH SHOW.**
2. Any exhibit, if sent to the Show, must be addressed to: Miss Bethan Lewis, RWAS Ltd., Llanelwedd, Builth Wells, Powys, LD2 3SY. Exhibits will only be returned if suitable packing is provided and carriage paid. **Exhibits must be staged between 4.00p.m. and 7.00p.m. on Sunday 20 July or between 6.00 am and 8.00 am on Monday 21 July 2008.**
3. No responsibility will be accepted by the Society for loss or damage to exhibits or any part thereof, during the show. The Society will not be responsible for the loss of any item

in transit to, or from the show.

4. All exhibits must remain on display for the four days of the show and must be collected between **5.30pm and 6.30pm** on Thursday 24 July 2008. Any exhibit left in the Hall after 6.30pm on the last evening will be the responsibility of the exhibitor.
5. Exhibitors are entitled to a maximum of two entries per class.
6. Prizes will be awarded or withheld at the discretion of the judges whose decision is final. Prize money will if possible be paid within 28 working days of the Show (except in cases of protest).
7. Exhibitors whose entrance fees exceed £15.00 will receive a one-day ticket of admission to the show. **Making up the entrance fee to £15.00 by donation is strictly not allowed.** All entry fees are inclusive of VAT.
8. The section will be closed for judging between 8.00a.m. and 12.30p.m. on the first day.
9. All exhibits must have been made by the exhibitor.
10. Exhibitor number cards must be firmly attached to all exhibits.
11. Soiled, used or worn articles will not be accepted.
12. All work to be completely finished unless otherwise stated in the schedule.
13. Any protest must be made in writing and handed to the Chief Sectional Steward within two hours of judging, together with a deposit of £25.00 which will be returned if the protest is upheld.
14. Please mark the envelope enclosing your entry form 'Handicrafts'.
15. No exhibit will be returned to exhibitor without "Brown Exhibitor Envelope".

## DEMONSTRATION AND COMPETITION PROGRAMME

### Senior Steward

Mrs C Thomas, Cartref, Llantwit Road, Wick, Cowbridge, CF71 7QD.

Monday 21 July	9.00am 9.30am -	Section open to the public. Hospital Caterers Association.
Tuesday 22 July	9.00am 9.30am – 6.30pm	Section open to the public Craft Workshops
Wednesday 23 July	9.00am 9.30am – 6.30pm	Section open to the public Craft Workshops

## The Next

**Royal Welsh Smallholder & Garden Festival** will be held on  
May 17 & 18 2008



**Royal Welsh Agricultural Winter Fair** will be held on  
December 1 & 2 2008



**Royal Welsh Show** will be held on  
July 20 – 23 2009

## Feature County Rota

2009: Glamorgan

2010: Ceredigion



**Ann Gillis**

# **8 DARKGATE**

**CARMARTHEN**

**CARMARTHENSHIRE**

**SA31 1PT**

**01267 231 919**

❖ **A fine selection of needlecraft materials  
haberdashery and wool.**

❖ **A comprehensive range of fine art and  
graphic supplies.**

❖ **A professional framing service.**

❖ **All under one roof in the centre of Carmarthen.**

**Open 9.00am- 5.30pm Monday – Saturday**

**For further information please phone  
01267 231 919**

**CYMDEITHAS AMAETHYDDOL FRENHINOL CYMRU CYF  
ROYAL WELSH AGRICULTURAL SOCIETY LTD.**

**FFURFLEN GAIS AR GYFER DOSBARTHIADAU GWAITH LLAW  
ENTRY FORM FOR HANDICRAFT CLASSES**

**CEISIADAU OLAF / ENTRIES CLOSE: 26 MAI / MAY 2008**



